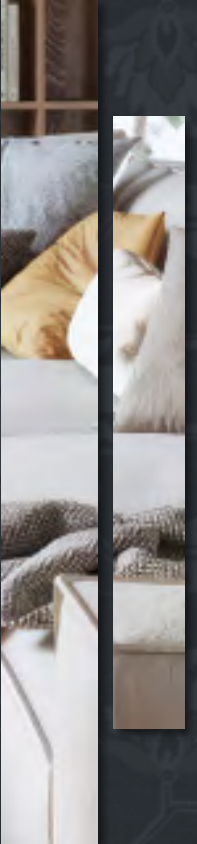
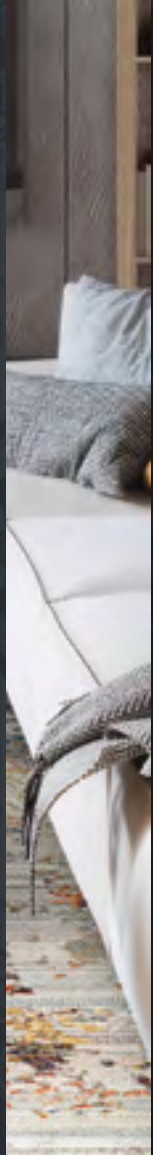
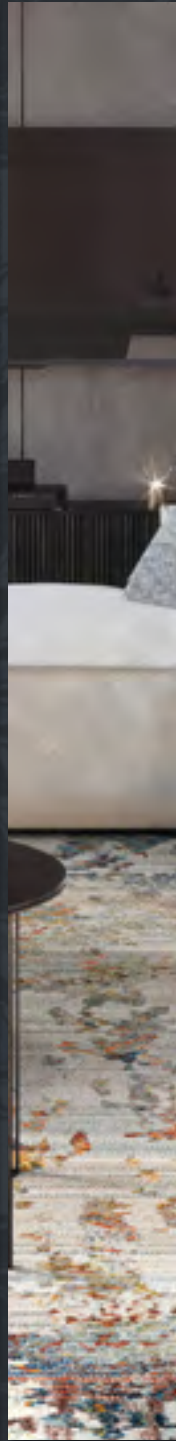


# FOUNDATIONAL

MACHINE-MADE COLLECTIONS



COURISTAN®  
*Inspired by Life*



# FOUNDATIONAL

## MACHINE-MADE COLLECTIONS

A rug can change the entire feel of a room.

Sometimes referred to as "art for your floor", Couristan believes that the foundation of any great room is a fabulous rug – a timeless piece that can transform any space in which it is placed. For many, the look of a room starts with that very special piece...something that has been chosen with the utmost care and consideration, tying everything together.

Our Foundational collection of rugs run the gamut from traditional to transitional to contemporary, all machine-woven of durable man-made and natural fibers. These collections feature added elements that lend texture and depth to the designs, giving them a handmade finish.

Whether your aesthetic is sleek and modern or rooted in tradition, it all begins with a great foundation.

---

1-6	EASTON
7-10	EUROPA
11-14	EVEREST
15-18	HALLI
19-22	IMPERIAL
23-26	KASHIMAR
27-30	MARINA
31-34	NOSTALGIA
35-38	OLD WORLD CLASSICS
39-42	PASHA
43-46	PRAIRIE
47-50	RAINBOW
51-54	SERENITY
55-58	SONNET
59-62	SULTAN TREASURES

# EASTON COLLECTION



100% HEAT-SET COURTRON™ ULTRA-FINE POLYPROPYLENE

FACE-TO-FACE WILTON WOVEN

DESIGNS ARE CREATED USING A MULTI POINT  
AND LOOM-CARVED TECHNIQUE

SOFT, LUXURIOUS FINISH IN EXCESS OF A MILLION POINTS  
OF YARN PER SQUARE METER

PILE HEIGHT: .35"

MADE IN BELGIUM



\* Designs 6345/5676,  
6398/0745 and 6822/6575  
are available in a  
18" x 18" sample.

This Collection  
is available  
to authorized  
Brick-and-Mortar  
and Ecommerce  
Couristan Dealers.

## STOCKED SIZES

2' x 3'7"

3'11" x 5'3"

5'3" x 7'6"

6'6" x 9'6"

7'10" x 11'2"

9'2" x 12'5"

2'7" x 7'10" Runner

*All Sizes Are Approximate*

EASTON COLLECTION



6335/3151  
WINSLET/NAVY-SAPPHIRE



6345/5676  
OGEE/DUSK BLUE



6362/6656  
ABSTRACT MOSAIC/SLATE



6372/2474  
LANDSCAPE/GREY-ANTIQUE CREAM



6349/6191  
FLORAL CHIC/BONE-MULTI



6353/6676  
SEISMIC/IVORY



6373/9666  
GRAVELSTONE/PEWTER



6376/4374  
GAMBIT BLOCKS/STONE-MULTI

EASTON COLLECTION



6389/5782  
SHADOWS/BLUE-ASH



6390/4848  
RADIATE/EARTHTONES



6437/7656  
ANTIQUE LACE/OYSTER



6822/6575  
CAPELLA/IVORY-LIGHT GREY



6398/0745  
SHIMMERING/EARTHTONES-MULTI



6437/6575  
ANTIQUE LACE/FLAX



6842/6151  
CHARLES/BONE-BLUE-MULTI

# EUROPA COLLECTION



100% ULTRA-SOFT POLYESTER  
FACE-TO-FACE WILTON WOVEN  
ELEGANT ABSTRACT DESIGNS  
ARE HIGHLIGHTED IN POLY-VISCOSE  
EACH DESIGN HAS A SUBTLE SHEEN  
AND A HIGH/LOW TEXTURE

PILE HEIGHT: .275"

MADE IN TURKEY



## STOCKED SIZES

2' x 3'11"

3'3" x 5'6"

5'3" x 7'6"

6'7" x 9'6"

7'10" x 10'9"

9'10" x 13'

2'2" x 7'7" Runner

*All Sizes Are Approximate*

This Collection  
is available  
to authorized  
Brick-and-Mortar  
and Ecommerce  
Couristan Dealers.

EUROPA COLLECTION



0479/4790  
AMALTHEA/MIST



0485/4485  
CALISTO/STARLIGHT



# EVEREST COLLECTION



100% HEAT-SET COURTRON™ POLYPROPYLENE

FACE-TO-FACE WILTON WOVEN

ONE MILLION POINTS OF YARN PER SQUARE METER

SOFT, LUXURIOUS FINISH

PILE HEIGHT: .35"

MADE IN BELGIUM



## STOCKED SIZES

2' x 3'7"

3'11" x 5'3"

5'3" x 7'6"

7'10" x 11'2"

9'2" x 12'5"

2'7" x 7'10" Runner

*All Sizes Are Approximate*

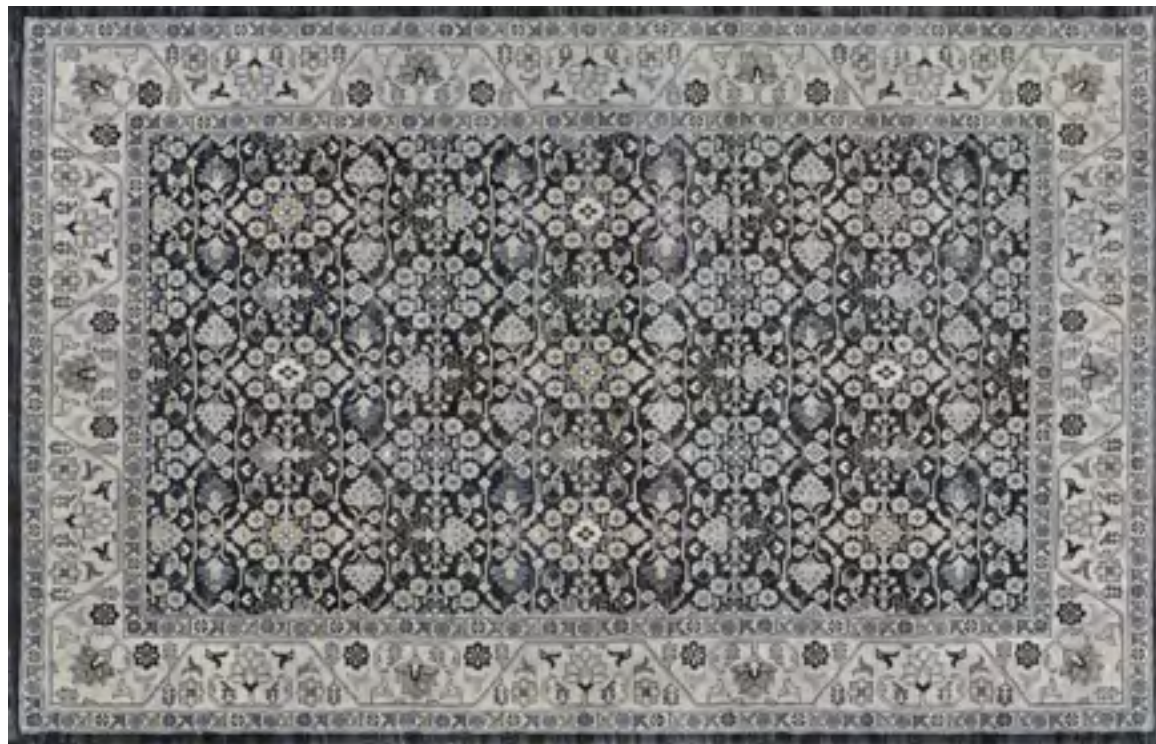
This Collection  
is available  
to authorized  
Brick-and-Mortar  
and Ecommerce  
Couristan Dealers.



EVEREST COLLECTION



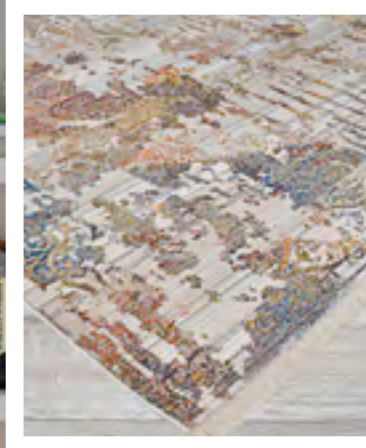
6340/7565  
PERSIAN ARABESQUE/BONE



6375/1001  
MALAYER/BLACK



# HALLI COLLECTION



\* All Designs are available in a 18" x 18" sample.

This Collection is available to authorized Brick-and-Mortar and Ecommerce Couristan Dealers.

100% MODIFIED POLYESTER

CROSS-WOVEN ON WILTON LOOMS  
ALLOWING FOR UP TO 72 COLORS PER DESIGN

500,000 POINTS OF YARN PER SQUARE METER

MODERN CLASSIC DESIGNS IN A MULTITUDE OF COLORS

COTTON BACKING • PILE HEIGHT: .236"

MADE IN TURKEY

STOCKED SIZES  
(WITH FRINGE)

5'3" x 7'6"

8' x 10'

8'6" x 13'6"

9' x 12'

2'6" x 8' Runner

*All Sizes Are Approximate*

# HALLI COLLECTION



H477/1100  
ANTIQUÉ LAVAR/SKY BLUE-STONE-MULTI



H653/1001  
ABSTRACT FLORALS/ANTIQUÉ LACE-MULTI



H724/3100  
KERMAN/BRICK-BROWN-MULTI



# IMPERIAL COLLECTION



MACHINE-WOVEN IN A FLAT WEAVE CONSTRUCTION OF A COTTON/POLYESTER BLEND, EMULATING A HANDMADE AREA RUG

PRINTED DESIGNS IN A DISTRESSED FINISH, GIVING THESE PIECES AN OLD-WORLD FEEL

MUTED COLORS LEND THEMSELVES TO A PLETHORA OF ENVIRONMENTS INCLUDING, TRADITIONAL, TRANSITIONAL, MODERN AND ECLECTIC

PILE HEIGHT: NO PILE (FLAT WEAVE)

MADE IN TURKEY



\* Designs V004/1004 and V005/1005 are available in a 18" x 18" sample.

This Collection is Only available to authorized Brick-and-Mortar Couristan Dealers.

## STOCKED SIZES

5' x 8'

8'3" x 10'

10' x 14'

*All Sizes Are Approximate*

IMPERIAL COLLECTION



V001/1001  
NAIN/SUNSET



V002/1002  
KIRMAN/APRICOT



V004/1004  
PERSIA/GREY



V005/1005  
HERIZ/RUST

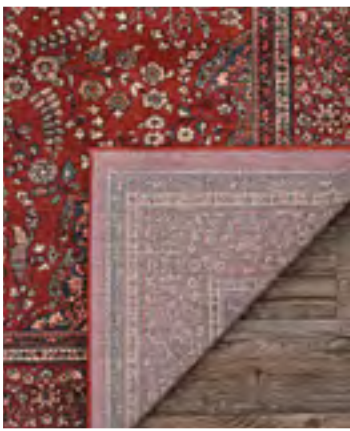


V003/1003  
ASIATIC/BLEUHAZE



V006/1006  
KARAJA/PLUM

# KASHIMAR COLLECTION



SEMI-WORSTED NEW ZEALAND WOOL  
FACE-TO-FACE WILTON WOVEN  
LOCKED-IN-WEAVE AND CRYSTAL-POINT FINISH  
25-YEAR LIMITED WARRANTY  
(ROLL RUNNERS CARRY A TWO-YEAR LIMITED WARRANTY)

PILE HEIGHT: .28"  
MADE IN BELGIUM

## STOCKED SIZES (WITH FRINGE)

2'2" x 4'9"

4'6" x 6'9"

5'3" x 7'9"

6'6" x 10'1"

7'10" x 11'2"

9'10" x 14'1"

2'2" x 9'3" Runner

\* Available in 26" & 31" Roll Runner

*All Sizes Are Approximate*

This Collection  
is available  
to authorized  
Brick-and-Mortar  
and Ecommerce  
Couristan Dealers.

# KASHIMAR COLLECTION



0612/3337  
ALL OVER CENTER MEDALLION/  
ANTIQUÉ RED



0614/4165  
FLORAL VASE/RUST



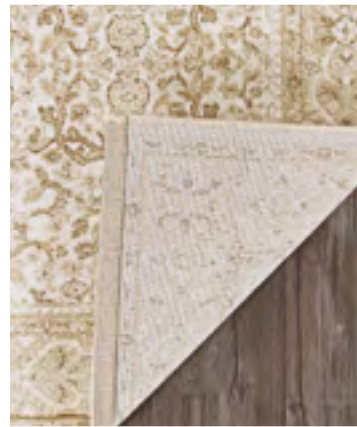
0614/4365  
FLORAL VASE/SAGE



8143/3203\*  
IMPERIAL BAKTIARI/ANTIQUÉ RED



# MARINA COLLECTION



100% HEAT-SET COURTRON™ POLYPROPYLENE  
FACE-TO-FACE WILTON WOVEN  
DESIGNS ARE CREATED USING A DROP STITCH  
AND DOUBLE POINT WEAVING TECHNIQUE  
SOFT, LUXURIOUS FINISH IN EXCESS OF A  
MILLION POINTS OF YARN PER SQUARE METER

PILE HEIGHT: .393"

MADE IN BELGIUM

## STOCKED SIZES

2'3" x 3'11"

3'11" x 5'6"

5'3" x 7'6"

6'6" x 9'6"

7'10" x 10'9"

9'2" x 12'9"

2'2" x 7'10" Runner

\* Available in 26" Roll Runner &  
Coordinating Wall-to-Wall Carpeting

*All Sizes Are Approximate*

\* Design 8974/0535  
is available in a  
18" x 18" sample.

This Collection  
is available  
to authorized  
Brick-and-Mortar  
and Ecommerce  
Couristan Dealers.



# MARINA COLLECTION



8960/0100\*  
ST. TROPEZ/CHAMPAGNE-PEARL



8962/0910  
IBIZA/PEARL



8974/0535  
LILLIAN/SLATE BLUE-OYSTER



8974/0567  
LILLIAN/OYSTER-SLATE BLUE



# NOSTALGIA COLLECTION



100% POLYESTER

CROSS-WOVEN ON WILTON LOOMS FOR UNIQUE APPEARANCES OF MULTI-COLORS AND A DENSE PILE

OVER 500,000 POINTS OF YARN PER SQUARE METER

SHORT FRINGE IS INCORPORATED IN EACH AREA RUG

WATERCOLOR AND PERSIAN-INSPIRED TRANSITIONAL DESIGNS

PERFECT FOR BEDROOMS, LIVING ROOMS AND FAMILY ROOMS

PILE HEIGHT: .354" • MADE IN TURKEY



STOCKED SIZES  
(WITH FRINGE)

5'3" x 7'6"

6'6" x 9'6"

7'10" x 10'9"

9'10" x 13'1"

*All Sizes Are Approximate*

This Collection is available to authorized Brick-and-Mortar and Ecommerce Couristan Dealers.

# NOSTALGIA COLLECTION



NS01/1301  
PERSIAN TABRIZ/ANTIQUE CREAM



NS02/1401  
ANTIQUE OUSHAK/DENIM



NS04/1405  
MYSTIC/DENIM-TAWNY



NS05/1405  
SERAPI/DENIM-TAWNY

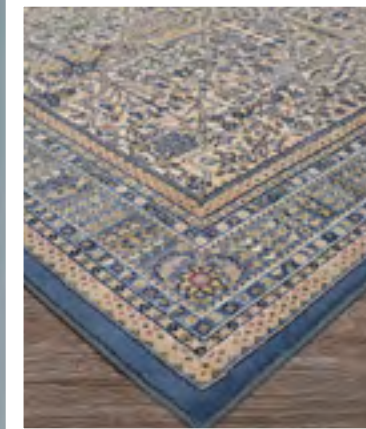


NS03/1502  
GARDEN PALACE/ANTIQUE CREAM



NS06/0514  
HAMADAN/TAWNY-DENIM

# OLD WORLD CLASSICS COLLECTION



SEMI-WORSTED NEW ZEALAND WOOL

FACE-TO-FACE WILTON WOVEN

LOCKED-IN-WEAVE AND CRYSTAL-POINT FINISH

REPLICAS OF ANCIENT HISTORIC PATTERNS,  
RICH COLOR SPECTRUM IN RUSTIC HUES

25-YEAR LIMITED WARRANTY  
(ROLL RUNNERS CARRY A TWO-YEAR LIMITED WARRANTY)

PILE HEIGHT: .28"

MADE IN BELGIUM

## STOCKED SIZES

4'6" x 6'6"

5'3" x 7'6"

6'6" x 9'10"

7'10" x 11'2"

9'10" x 13'9"

2'2" x 8'11" Runner

\* Available in 26" & 31" Roll Runner

*All Sizes Are Approximate*

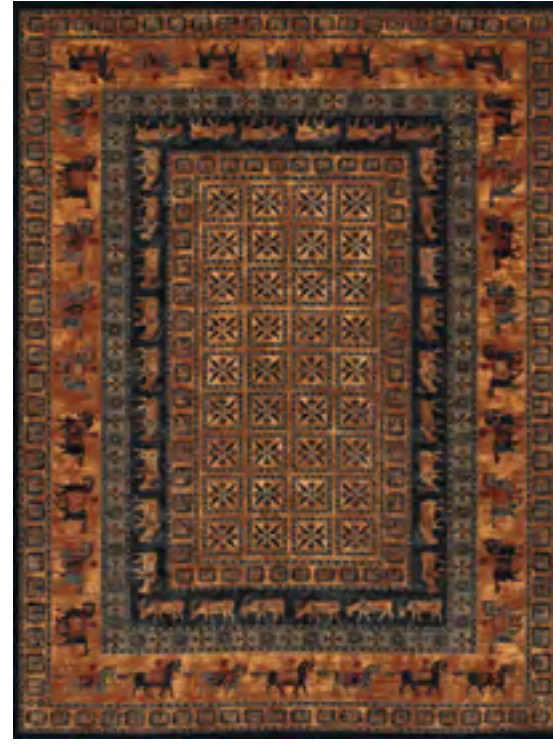
\* Designs 1067/3097  
and 4308/0300 are  
available in a  
18" x 18" sample.

This Collection  
is available  
to authorized  
Brick-and-Mortar  
and Ecommerce  
Couristan Dealers.

OLD WORLD CLASSICS COLLECTION



1067/3097  
KERMAN MEDALLION/BURGUNDY



1660/3066\*  
PAZYRK/BURNISHED RUST



4532/2103  
NAZMIYAL/ALABASTER



4532/7101  
NAZMIYAL/ANTIQUE CREAM

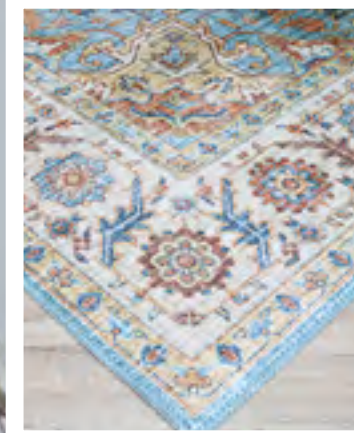


4308/0300\*  
KASHKAI/BURGUNDY



4538/1011  
FLORAL TABRIZ/ALABASTER-POWDER BLUE

# PASHA COLLECTION



MACHINE-WOVEN BASE OF 100% POLYESTER

DIGITALLY PRINTED MOTIFS WITH A NON-SKID BACKING

SADDLE-STITCHED EDGES

A GORGEOUS COLLECTION OF PRINTED RUGS  
THAT FEATURE OLD-WORLD DESIGNS IN A  
MODERN INTERPRETATION

PILE HEIGHT: .275"

MADE IN CHINA



## STOCKED SIZES

5' x 8'

8' x 10'

9' x 12'

2' x 8' Runner

*All Sizes Are Approximate*

This Collection  
is available  
to authorized  
Brick-and-Mortar  
and Ecommerce  
Couristan Dealers.

PASHA COLLECTION



4648/0648  
SAROUK/NAVY



4748/0474  
HERIZ/RUBY



5085/5040  
ANTIQUÉ KASHAN/RUST



5086/6214  
ISFAHAN/MUSHROOM



# PRAIRIE COLLECTION



100% POLYESTER MACHINE-WOVEN BASE  
WITH A NON-SKID BACKING

EMULATING COWHIDES IN VARIOUS PATTERNS

A UNIQUE COLLECTION OF DIGITALLY PRINTED RUGS  
TAKES THE HIDE TREND TO ANOTHER LEVEL

PILE HEIGHT: .079"

MADE IN CHINA



## STOCKED SIZES

2' x 3'7"

3'9" x 5'5"

5'3" x 7'6"

7'6" x 10'

2'3" x 7'10" Runner

*All Sizes Are Approximate*

This Collection  
is available  
to authorized  
Brick-and-Mortar  
and Ecommerce  
Couristan Dealers.



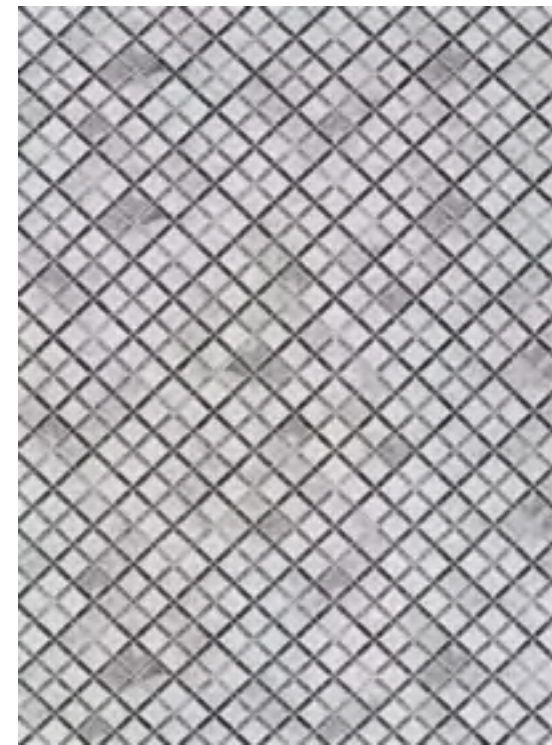
PRAIRIE COLLECTION



2837/2710  
KENAI/BROWN



2882/3514  
ARCHETYPE/GREY-BLACK



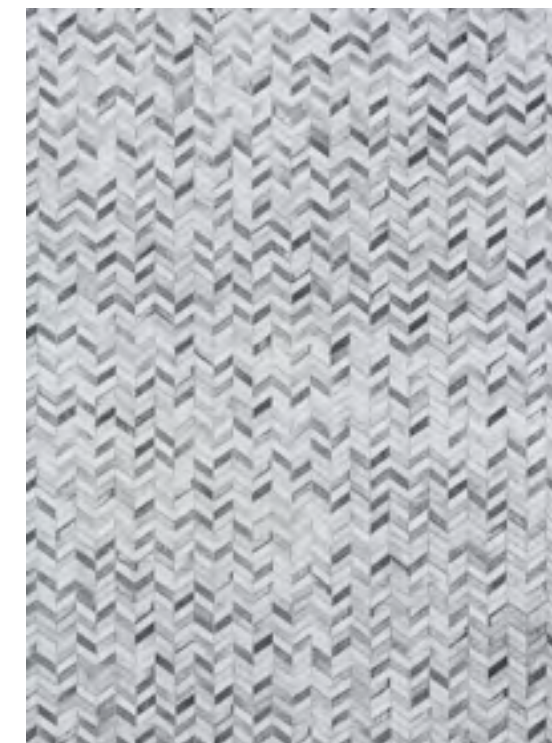
2885/3007  
RETRO LATTICE/GREY-IVORY



2886/3011  
GEO MOSAIC/GREY-BLUSH



2883/0380  
FALSTERBO/DENIM



3056/0531  
VESLE/ICE CAPS

# RAINBOW COLLECTION



MACHINE-WOVEN BASE OF 100% POLYESTER

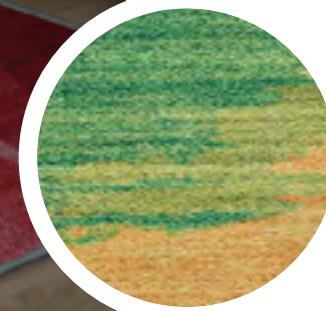
DIGITALLY PRINTED MOTIFS WITH A NON-SKID BACKING

SERGED EDGES

A PLAYFUL COLLECTION OF PRINTED AREA RUGS  
INSPIRED BY THE COLORS OF THE RAINBOW

PILE HEIGHT: .276"

MADE IN CHINA



## STOCKED SIZES

5' x 8'

8' x 10'

9' x 12'

2' x 8' Runner

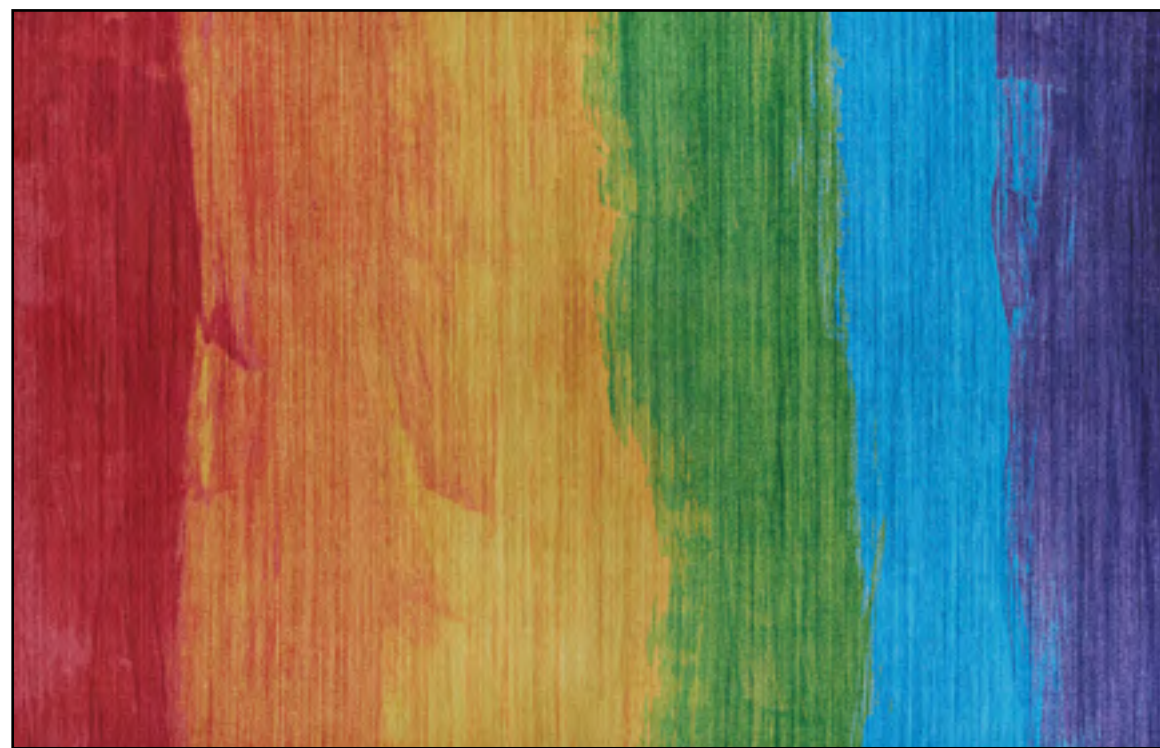
*All Sizes Are Approximate*

This Collection  
is available  
to authorized  
Brick-and-Mortar  
and Ecommerce  
Couristan Dealers.

# RAINBOW COLLECTION



R625/1000  
CANDILAND/MULTI



R627/1000  
PASSION/MULTI



# SERENITY COLLECTION



100% HEAT-SET COURTRON™ POLYPROPYLENE  
FACE-TO-FACE WILTON WOVEN  
ONE MILLION POINTS OF YARN PER SQUARE METER

UNIQUE ABSTRACT DESIGNS  
HIGHLIGHTED IN MUTED COLORS

SOFT, DENSE LUXURIOUS PILE

PILE HEIGHT: .393"

MADE IN BELGIUM



## STOCKED SIZES

2' x 3'11"

3'11" x 5'6"

5'3" x 7'6"

6'6" x 9'6"

7'10" x 10'9"

9'2" x 12'9"

2'2" x 7'10" Runner

*All Sizes Are Approximate*

This Collection  
is available  
to authorized  
Brick-and-Mortar  
and Ecommerce  
Couristan Dealers.

# SERENITY COLLECTION



5145/0100  
CRYPTIC/BEIGE-CHAMPAGNE



5145/0515  
CRYPTIC/GREY-OPAL



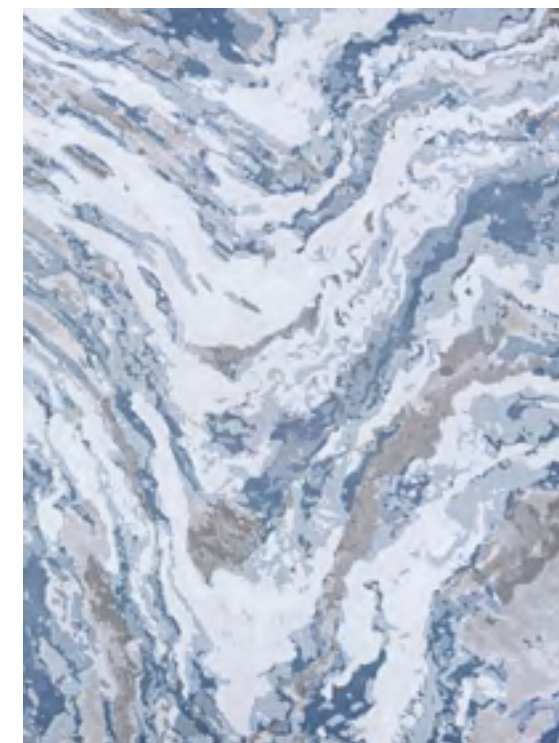
5159/0910  
VIRGA/MUSHROOM-OPAL



5159/0911  
VIRGA/LIGHT GREY-OPAL

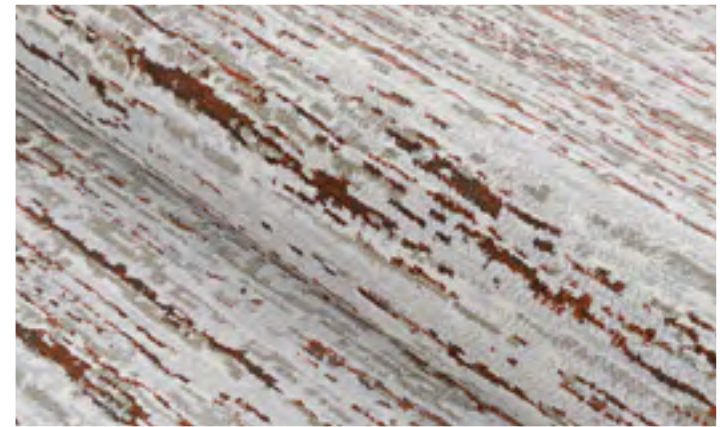


5145/0912  
CRYPTIC/LIGHT GREY-CHAMPAGNE



5161/0505  
ABSTRACT MARBLE/GREY-OPAL

# SONNET COLLECTION



85% COURTRON™ POLYPROPYLENE / 15% SHINY POLYESTER

FACE-TO-FACE WILTON WOVEN

SOFT, LUXURIOUS FINISH THAT FEATURES  
ONE MILLION POINTS OF YARN PER SQUARE METER

CONTEMPORARY MARBLE AND ABSTRACT DESIGNS  
PERFECT FOR ANY ENVIRONMENT

PILE HEIGHT: .433"

MADE IN BELGIUM



\* Designs 3801/6151  
and 3802/6111 are  
available in a  
18" x 18" sample.

This Collection  
is available  
to authorized  
Brick-and-Mortar  
and Ecommerce  
Couristan Dealers.

## STOCKED SIZES

5'3" x 7'6"

6'6" x 9'6"

7'10" x 11'2"

9'2" x 12'5"

2'7" x 7'10" Runner

*All Sizes Are Approximate*

# SONNET COLLECTION



3801/6111  
MARBRE/GREY-CHOCOLATE



3801/6141  
MARBRE/GREY-BLACK



3802/6111  
CAPILLARY/GREY-CHOCOLATE



3802/6141  
CAPILLARY/GREY-BLACK



3801/6151  
MARBRE/POWDER BLUE-IVORY



# SULTAN TREASURES COLLECTION



\* Designs 7145/4646 and 7185/5789 are available in a 18" x 18" sample.

This Collection is available to authorized Brick-and-Mortar and Ecommerce Couristan Dealers.

100% HEAT-SET COURTRON™ POLYPROPYLENE  
FACE-TO-FACE WILTON WOVEN  
ONE MILLION POINTS OF YARN PER SQUARE METER  
SOFT, LUXURIOUS FINISH  
TRADITIONAL PERSIAN DESIGNS HIGHLIGHTED  
IN A RANGE OF RICH, MODERN COLORS  
PILE HEIGHT: .43"  
MADE IN BELGIUM

## STOCKED SIZES

- 2' x 3'7"
- 3'11" x 5'3"
- 5'3" x 7'6"
- 6'6" x 9'6"
- 7'10" x 11'2"
- 9'2" x 12'5"
- 2'7" x 7'10" Runner

*All Sizes Are Approximate*



# SULTAN TREASURES COLLECTION



7141/5656  
PERSIAN ISFAHAN/SLATE



7141/6666  
PERSIAN ISFAHAN/ANTIQUE CREAM



7185/5789  
HARISH/CHARCOAL



7193/6696  
ISTAN/DUNE



7145/9696  
FLORAL YAZD/GREY

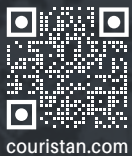






TWO EXECUTIVE DRIVE, FORT LEE, NEW JERSEY 07024 • 800.223.6186 • COURISTAN.COM

Wall-To-Wall Carpet • Area Rugs • Roll Runners • Custom Rugs



[couristan.com](http://couristan.com)



JANUARY 2025